

## How To Make Feltboard Characters

### PEACHES

#### SUPPLIES:

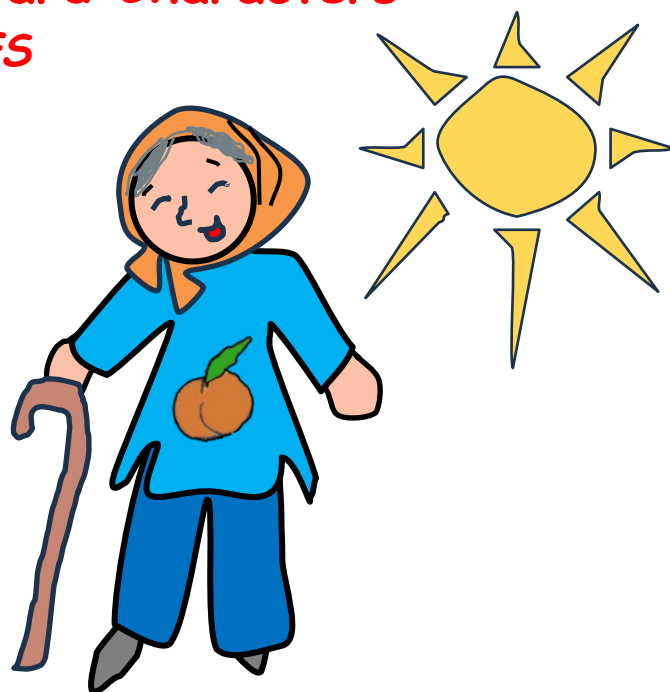
1. Felt: white, peach, brown, red, green, gold, orange, blue, turquoise, yellow, and others as desired
2. Good all-purpose glue or craft fabric bonding glue (works best!)
3. Markers, fine point: black; and medium point different colors
4. Scissors
5. White or light-colored cardstock or art paper
6. Yarn, buttons, sequins, fabric scraps, foil

#### VILLAGERS:

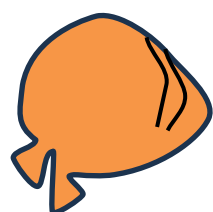
1. Using the patterns below, or from the book's illustrations, draw and cut out **all** parts of the peach-loving villagers from the available felt. Assemble the parts and glue onto a piece of black or other dark felt, then cut out around the parts.  
**Other option:** Photocopy or draw the pieces on white or colored art paper, color or paint as needed. Glue the parts together. When dry, glue onto a piece of black or other dark felt, then cut out.
2. Decorate the clothing pieces as desired. (Allow to dry.)
3. **Reminder:** when assembling the pieces, be aware of the placement, such as the hair and headdresses go on top of the face/head, the shoes and arms/hands go under sleeves, etc.

#### HOUSES, BUILDINGS AND OTHER STRUCTURES:

1. Draw paper patterns, then pin onto colored felt and cut out all the pieces. Assemble the felt pieces into place on the feltboard. If the pieces do not stick so well, use small pieces of double-stick cellophane tape.
2. Add other items, such as trees, shrubs, out-buildings, farm machinery, farm animals, baskets of peaches or kernels, etc.
3. **For the Syrup-Making Machine:** using the illustrations in the book or on these instructions, draw, or make a photocopy of, the machine onto white or light-colored art paper. Glue this piece (or pieces) onto black or dark felt, and when dry, cut out the piece.

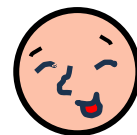


See below and next page for pattern pieces that you can copy and use for making this scene. For help on making a feltboard, go to [www.hoopoebooks.com](http://www.hoopoebooks.com).

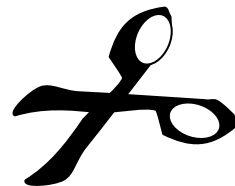


YARN for  
HAIR  
(white or gray)

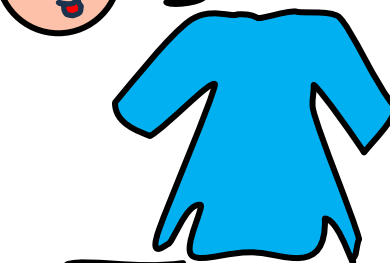
#### An Old Villager:



HEADDRESS & FACE  
Draw the Headdress &  
Face on Colored Felt  
(or on Colored Paper &  
glue onto felt) & cut  
out the pieces.

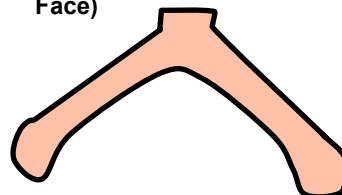


TUNIC  
(any color)



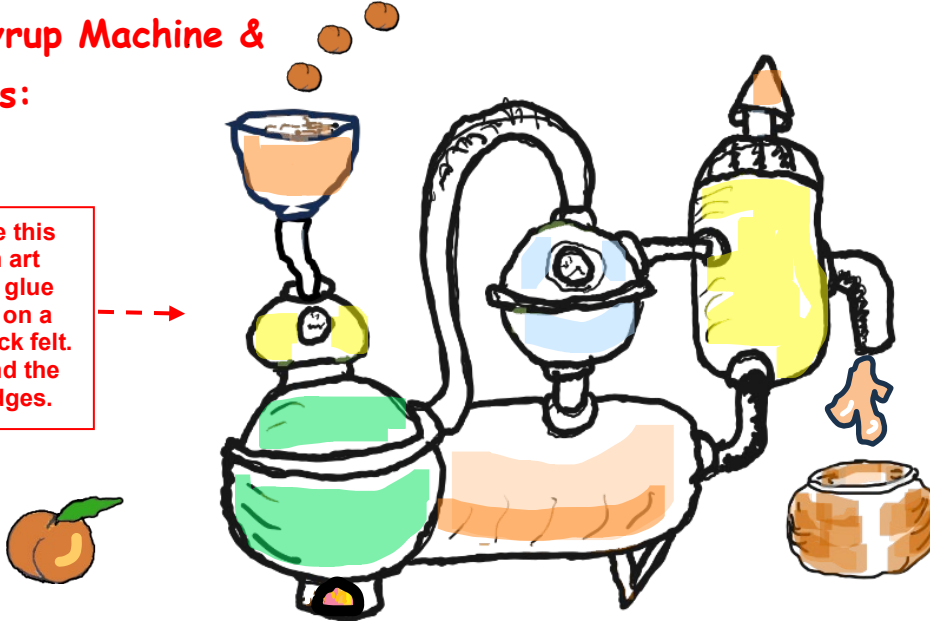
PANTS &  
SHOES  
(any color)

ARMS  
(same color as  
Face)



## The Syrup Machine & Objects:

Reproduce this image on art paper and glue into place on a piece of black felt. Trim around the outside edges.



**MERCHANT**  
Draw the Merchant and Camel, glue the piece(s) onto a piece of dark felt, and trim.

### FELTBOARD BACKGROUND/SETTING:

1. Cut a rectangle piece of light blue felt large enough to fit all the assembled pieces. Use this as the background.
2. Cut out a piece of green felt for hills and lawn, the same width as the feltboard. Cut out felt shrubs to place along the "hilltops" and decorate with small orange circles to represent peach trees.
3. Cut out pieces of felt for houses and other buildings for artistic background charm.
4. Place the pieces on the background felt. (If the pieces do not stick well enough, use a small piece of double-stick tape on the back of the piece to fasten in place.)

### VILLAGERS

Photocopy head, shoulders, arms and hands, or draw your own version. Glue on black felt and trim.



## OTHER OBJECTS &

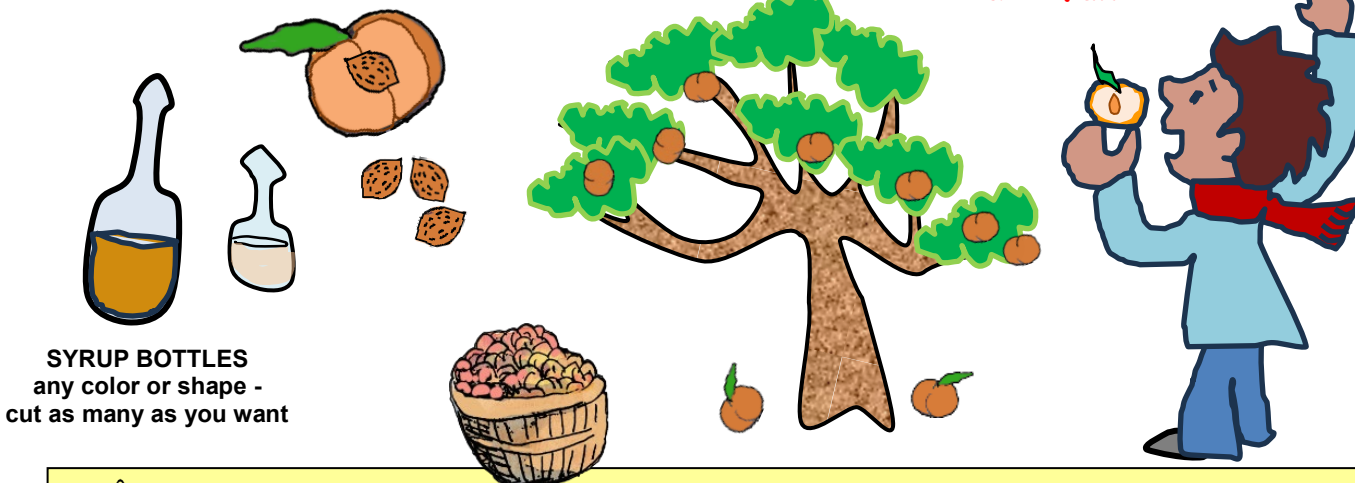
### CHARACTERS:

1. Cut out a felt piece for a **decorative spread** for drying peaches. Apply cut-outs of peaches, whole, half and dried. Add fringe and other decorations to the spread, as desired.
2. Draw and cut out the **Merchant** and other characters using cardstock or art paper, and place on rooftops, in or under trees, etc.

### Suggested Play:

Cover a felt board with light-colored felt (such as light blue). If a felt board is not available, tape the felt background onto the wall in easy reach of the children. Apply the characters and articles as the story is read or recited. For a larger scene, increase the size of the pieces by the same percentage.

### Have fun!



**SYRUP BOTTLES**  
any color or shape -  
cut as many as you want



**CAUTION:** Avoid injury! Adult supervision recommended, if necessary. This project includes cutting with scissors!