

Hoopoe Teaching-Stories™

How To Make a Finger-Puppet The Palace of the Man in Blue

Step 1:

1. Cut out **FINGER SUPPORT** from felt or cardstock paper & roll snugly around your finger and pin the long edges together.
2. Sew or glue along open edge. (Set aside until last step.)

Puppet Cardstock Backing:

Once the felt or paper pieces are cut out, lightly assemble them on thicker felt or a heavy piece of paper and trace the outline. Use this to help cut out the backing. (See next page for further instructions.)

Step 2 – Face & Hair:

1. Cut out **FACE**. Glue and/or draw on **EYES, BROWS, NOSE, MUSTACHES, BEARDS, FACE**, and let dry.
2. Draw or reproduce the **HAIR** and cut out. Or glue cotton or yarn onto the Hair cutout. Set this piece aside until ready to assemble the **HEAD** piece.

Step 3 – Clothing & Other Items:

1. Cut out **TUNICS, VESTS, SASHES, TROUSERS, LEGGINGS, SHOES**, etc. Assemble the clothing pieces onto the **BACKING** piece and glue or sew into place. (Remember, trousers go under tunics, shoes under trousers.) Set aside to dry.
2. Cut out **OTHER ITEMS**, such as the **HEADDRESSES, CAPS, DOG, PEACOCK**, and set aside until final application.

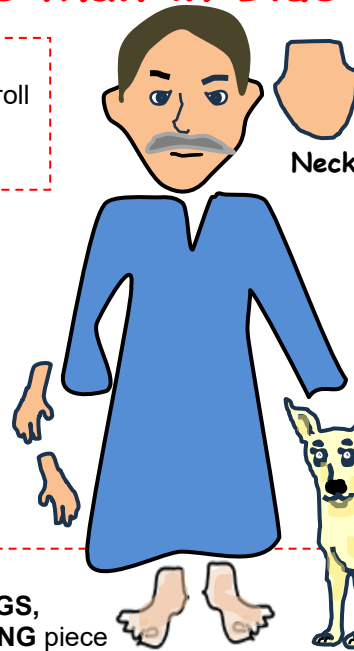
Step 4 – Head/Face, Hands & Feet:

1. Glue or sew the **HEAD/FACE** in place over the **CLOTHING**. The **HAIR** can be glued onto the **HEAD/FACE**. Allow to dry. (See Item 2 in "Ideas for Other Characters" on next page for suggestions on the placement of the dog and other animals.)
2. Glue the **HEAD/FACE/HAIR** piece into place on the **BACKING**. (Remember, sometimes the **HAIR** may overlap the **TUNIC** or other clothing.)
3. For the Steward's wig, draw and cut out before glueing on cotton or yarn as a special effect.
4. Draw, cut out and glue or sew on the two **ARM/HAND** pieces under the **TUNIC** sleeves. For the Man in Blue, carefully slip the **FEET** under the **TUNIC bottom** and glue or sew into place. Allow to dry if glued.
5. Once the puppet is completely dry, carefully apply extra glue to help stabilize the pieces.
6. Set puppet aside until all glue has dried.

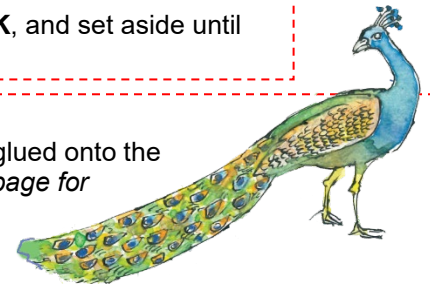
Step 5 – Finger Support:

Once the puppet is completely dry, place the **FINGER SUPPORT** on the back of the puppet. Glue or sew to attach.

EASY OPTION: Photocopy the color pieces onto white cardstock and cut out and attach all pieces by glue following Steps 1-5. Allow to dry completely before use. If photocopying is not an option, cut out the pattern pieces from white cardstock, color or paint the pieces as desired, and follow Steps 1-5 from above using glue. Allow to dry completely before use.



Step 1



Have fun!

The Palace of the Man in Blue by Idries Shah © The Estate of Idries Shah 2023, illustrated by Laetitia Bermejo © 2023

⚠ CAUTION: Avoid injury! Adult supervision recommended, if necessary. This project includes cutting with scissors, using a sharp sewing needle and sharp straight pins!

Finger-Puppet Supplies & Pattern Pieces

Supplies (for puppet):

1. Felt or Cardstock: Color of choice for HEAD, ARMS, HANDS, FEET, CLOTHING & FINGER SUPPORT
2. Tools, Animals, Yarns, and other props: felt or cardstock, color appropriately.
2. Marker: fine-point black (*optional*: fabric pen)
3. Sewing needle & Thread (if using)
4. Scissors
5. Straight pins
6. Fabric glue (or Tacky® Glue)
7. Cellophane tape & craft sticks or pencils, if using
8. Glue on rick-rack braid, ribbon, sequins, beads and other embellishments on clothing pieces, if desired.

Optional: For added effect, outline the pieces with a fine-point black marker or fabric pen.

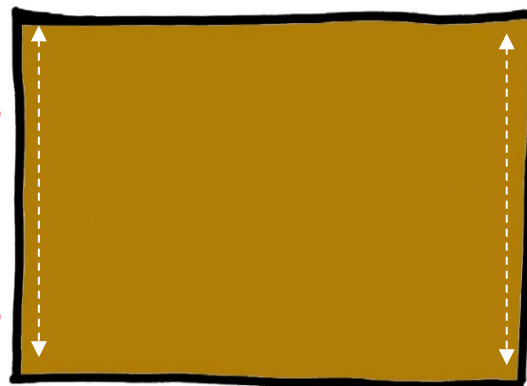


Supplies (for paper-cardstock puppet):

1. Light-weight cardstock: white
 2. Markers, fine point: black; wider point with colors of choice. OR, use craft paint or crayons.
 3. Scissors
 4. Paper craft glue
- Optional:** Photocopy this sheet onto white cardstock and cut out the pieces, leaving the black outlines for extra dimension. Assemble using the Steps on previous page.

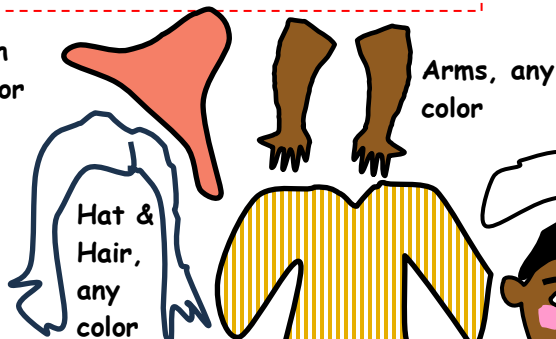
← roll this way →

Sew or glue left and right edges together to make a finger tube.

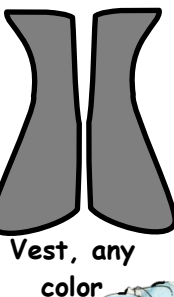


FINGER SUPPORT - color of choice

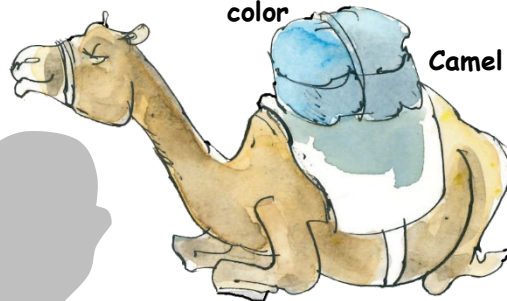
A Merchant with Glasses, any color



Arms, any color



Vest, any color

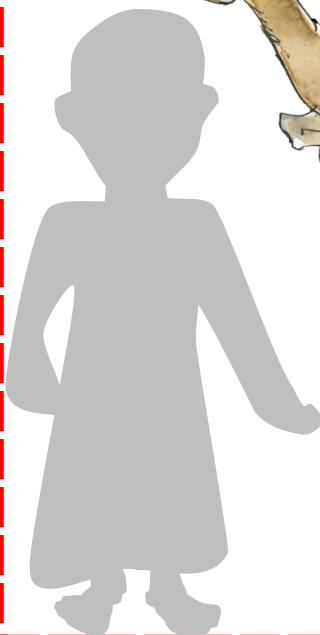


Camel



A Merchant with Decorative Tunic & Trousers, any color

The Steward
(See *Palace of the Man in Blue Paper Bag* puppets for pattern)



BACKING

Once all the puppet parts are cut out, assemble the puppet together on a piece of cardstock or heavy felt (any color). Trace around the outside of the assembled puppet and cut out the outline as the backing. Glue the assembled pieces onto this outline piece for extra strength while in play.

Ideas for Other Characters & Objects from the Story:

1. Draw or photocopy the **Palace**, the **Gates**, **Trees**, **Plants**, **Tables full of Food**, etc., on sturdy cardstock paper. Cut out the pieces and glue onto a large sheet of craft paper as background for the Finger-Puppet play. (See "*The Palace of the Man in Blue Paper Bag Puppets*" for more patterns.)
2. Reproduce the **DOG**, the **PEACOCK**, **CAMEL** and other items on sturdy cardstock & cut out, but do not glue into place. Allow the children to apply as desired with a small piece of double-stick tape while reading or reciting the story.
3. **PUPPETS ON A STICK:** See "*The Palace of the Man in Blue Paper Bag Puppets*" (www.hoopoebooks.com) for ideas.

Use your imagination for further characters and props. If children are to create the puppets, remember to keep it simple for them.